

## 2018 Table Finish Guide



## Index

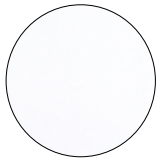
Standard Base Epoxy Finishes & Metal Finishes	2
Standard Edge Profile & PVC Finishes	3
Standard Edge Profile & Poly Resin Finishes	4
Standard Edge Profile & Wood Finishes	5
Top Grade Card - ST1	6
Top Grade Card - ST2	7
Top Grade Card - ST3	8
Top Grade Card - ST4	9
Top Grade Card - ST5	10
Top Grade Card - ST6	11

---

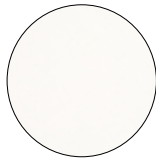
# STANDARD BASE EPOXY FINISHES

---

• *Standard base finishes are powder epoxy in a matte textured finish. Custom finishes are available on special request.  
Upcharges apply to polished chrome and satin nickel.*



#7024 Chalk White



#7027 Smoky White



#6037 Light Gray



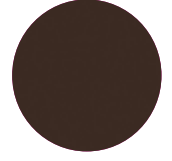
#6012 Medium Gray



#6054 Graphite



#6052 String



#ST 604 Dark Brown



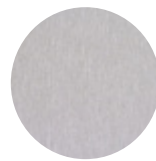
#2069 Beige



#2084 Bark



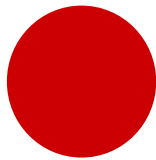
#6053 Black



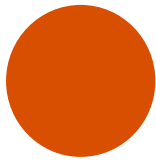
#003 Silver



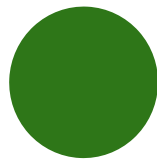
Yellow



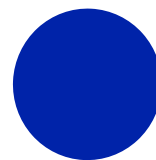
Red



Orange



Green



Blue

---

# OPTIONAL BASE METAL FINISHES

---

*\*Upcharge applies*



#80 Satin Nickel



#90 Polished Chrome

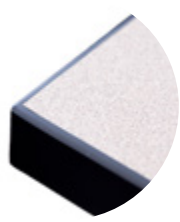
---

# STANDARD EDGE PROFILES

---

## PVC Edge - *Custom PVC edge profiles available on request*

- All tops are constructed with 45 lbs. particle board.
- Phenolic balancing sheets are added to the underside of the surface to prevent warping.
- PVC T-mold profiles require a 1" radius corner.
- 3600 bullnose T-mold is standard with a 2 1/2 " radius corner
- 3MM PVC edges are eased



3mm



#3500 \*



#3507



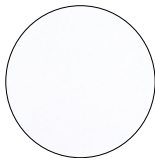
#3600 \*

---

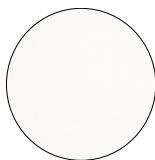
## Standard PVC Finishes

---

• Custom finishes and profiles are available on special request. Poly Resin is not available in a woodgrain finish.



#7024 Chalk White



#7027 Smoky White



#6037 Light Gray



#6012 Medium Gray



#6054 Graphite



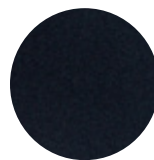
#6052 String



#2069 Beige



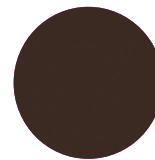
#2084 Bark



#6053 Black



#003 Silver



#ST 604 Dark Brown



#8340 Maple



#8371 Isle Maple



#W8325 T Cherry

• Limited to #3500, #3600

---

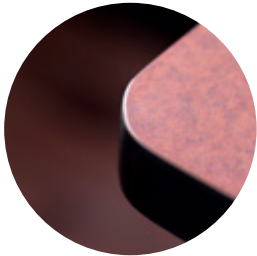
# STANDARD EDGE PROFILES

---

## Poly Resin Edge - *Custom poly resin edge profiles available on request*

---

- Edges are seamless. impact resistant anti-microbial, stain resistant and repairable.
- Poly Resin edges are permanently bonded to the table core.
- Scratches can be polished out using fine steel wool.



#3



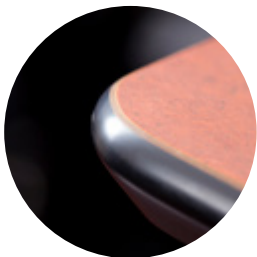
#5



#7



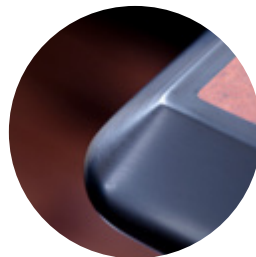
#17



#19



#50



#17R



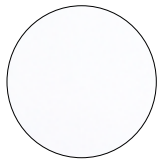
#200 Spill Proof

---

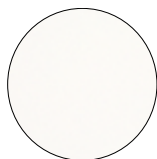
## Poly Resin Finishes

---

- Custom finishes and profiles are available on special request. Poly Resin is not available in a woodgrain finish.



#7024 Chalk White



#7027 Smoky White



#6037 Light Gray



#6012 Medium Gray



#6054 Graphite



#6052 String



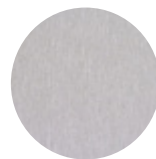
#2069 Beige



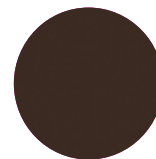
#2084 Bark



#6053 Black



#003 Silver



#ST 604 Dark Brown

---

# STANDARD EDGE PROFILES

---

## Solid Wood Edge - *Custom wood edge profiles available on request*

*\* For wood edge care and maintenance refer to the Standard Wood Finishes page, below*



#7600



#7500 Bevel



#7300 Flat Eased

---

## Standard Wood Finishes

---



Natural - W#01



Black - W#02



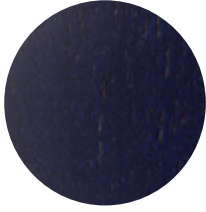
Green Moss - W#03



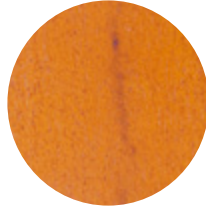
Wine - W#04



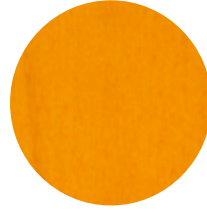
Grape - W#05



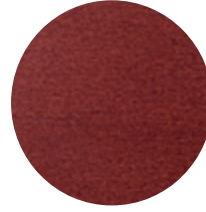
Sapphire - W#06



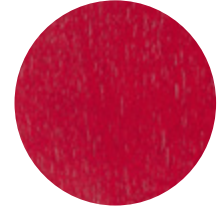
Pearwood - W#07



Honey - W#08



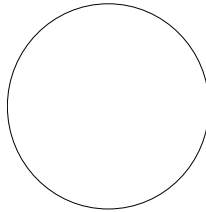
Mahogany - W#09



Ruby - W#10



Charcoal - W#11



White - W#12



Linseed - W#13



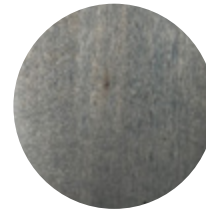
Silver - W#14



Cherry - W#15



Wenge - W#16



Vintage Grey - W#17








Walnut - W#18

- Standard wood edges and veneers are offered in solid birch and/or maple.
- Oak, Mahogany, Walnut, Cherry and other species are available on special request.
- Custom finishes are available at \$280.00 List per finish. One time charge.

- Due to the variation in texture, density, grain pattern, and tone of selected wood, variation in color may occur.
- Dust only with a clean, dry cloth, going with the grain Clean any marks with a damp cloth, using a small quantity of mild soap and water.



# TOP GRADE CARD


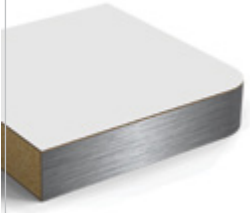
## ST1 Top Finish Options

Top Surface	Edge Profile				
<p><u>Standard Laminate Selection</u></p> <p>Any Matte Laminate from the following manufacturers:</p> <p>Formica (-58 finish only)</p> <p>Wilsonart (-60 matte finish only)</p> <p>Nevamar (T- textured finish only)</p> <p>Arborite ( CA-Cashmere finish only)</p> <p>Pionite (Suede finish only)</p> <p>* All tops are 1 1/8" thick</p>	Self Edge	PVC	PVC	PVC	PVC
	3000	3500	3507	3600	3MM
					
<p>* Tops have particle board cores unless otherwise specified.</p> <p>* Custom laminates available on special request</p>	Square corners	1" radius corners	1" radius corners	2.5" radius corners	Square corners

# TOP GRADE CARD

## ST2 Top Finish Options



Top Surface	Edge Profile	
<p>Any Matte Laminate from the following manufacturers:</p> <p>Formica (-58 finish only)</p> <p>Wilsonart (-60 matte finish only)</p> <p>Nevamar (T- textured finish only)</p> <p>Arborite ( CA-Cashmere finish only)</p> <p>Pionite (Suede finish only)</p> <p><b>* Tops are 1 1/2" thick</b></p>	<p>Self Edge</p> <p>3050</p>	<p>PVC</p> <p>3570</p>
		
	<p>Square corners</p>	<p>1" radius corners</p>
<p>* Tops have particle board cores unless otherwise specified.</p> <p>* Custom laminates available on special request</p>		


Top Surface	Edge Profile	
<p>Any Matte Laminate from the following manufacturers:</p> <p>Formica (-58 finish only)</p> <p>Wilsonart (-60 matte finish only)</p> <p>Nevamar (T- textured finish only)</p> <p>Arborite ( CA-Cashmere finish only)</p> <p>Pionite (Suede finish only)</p> <p>* Tops are 1 1/8" thick</p>	<p>Self Edge Polished Stainless</p> <p>3020</p>	<p>Self Edge Satin Stainless</p> <p>3021</p>
		
	<p>1" radius corners</p>	<p>1" radius corners</p>
<p>* Tops have particle board cores unless otherwise specified..</p> <p>* Custom laminates available on special request</p>		



# TOP GRADE CARD




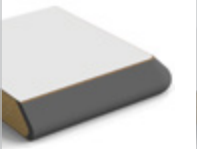

## ST3 Top Finish Options

Top Surface	Edge Profile				
	Self Edge	PVC	PVC	PVC	PVC
<p>Any Matte Laminate from the following manufacturers:</p> <p>Formica (-58 finish only)</p> <p>Wilsonart (-60 matte finish only)</p> <p>Nevamar (T- textured finish only)</p> <p>Arborite ( CA-Cashmere finish only)</p> <p>Pionite (Suede finish only)</p> <p>* All tops are 1 1/8" thick</p> <p>* Tops include light weight corrugated core.</p>  <p>* Custom laminates available on special request</p>	3000-CC	3500-CC	3507-CC	3600-CC	3MM-CC
	 <p>* light weight core reduces top weight by 40%. To calculate the weight reduction, multiply the square footage of the top by 2.5 lbs</p>				

Top Surface	Edge Profile	
	Reverse Bevel	Eased
<p>Any Matte Laminate from the following manufacturers:</p> <p>Formica (-58 finish only)</p> <p>Wilsonart (-60 matte finish only)</p> <p>Nevamar (T- textured finish only)</p> <p>Arborite ( CA-Cashmere finish only)</p> <p>Pionite (Suede finish only)</p> <p>* All tops are 1 1/8" thick</p> <p>* Tops are plywood core 17 ply, with a natural edge finish.</p> <p>* Custom laminates available on special request</p>	9001	9002
		
	1/2" radius corners	1/16" radius corners

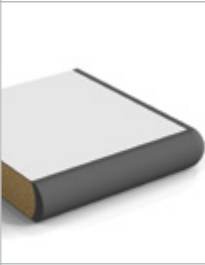





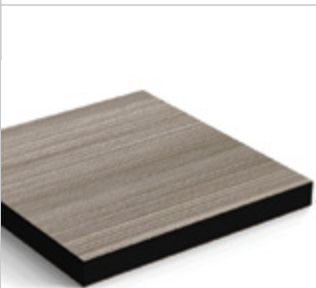
# TOP GRADE CARD

## ST4 Top Finish Options

Top Surface	Edge Profile				
<p>Any Matte Laminate from the following manufacturers:</p> <ul style="list-style-type: none"> <li><i>Formica (-58 finish only)</i></li> <li><i>Wilsonart (-60 matte finish only)</i></li> <li><i>Nevamar (T- textured finish only)</i></li> <li><i>Arborite ( CA-Cashmere finish only)</i></li> <li><i>Pionite (Suede finish only)</i></li> </ul> <p>* All tops are 1 1/8" thick</p> <p>* Tops have particle board cores unless otherwise specified.</p> <p>* Custom laminates available on special request</p>	<i>Poly Resin - Seamless, anti-microbial, repairable and impact resistant</i>				
	3 (eased)	5 (bullnose)	7 (waterfall)	17 (bevel)	19 (reverse bevel)
					




# TOP GRADE CARD


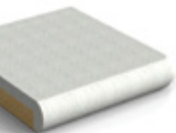
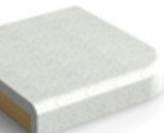

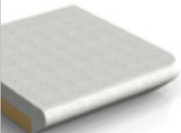
## ST5 Top Finish Options

Top Surface	Edge Profile		
<p>Any Matte Laminate from the following manufacturers:</p> <ul style="list-style-type: none"> <li>Formica (-58 finish only)</li> <li>Wilsonart (-60 matte finish only)</li> <li>Nevamar (T- textured finish only)</li> <li>Arborite ( CA-Cashmere finish only)</li> <li>Pionite (Suede finish only)</li> </ul> <p>* Tops are 1 1/8" thick</p>	<p><i>Poly Resin - Seamless, anti-microbial, repairable and impact resistant</i>  <i>In the following profiles: # 50, 17R, 200</i></p>		
<p>Any Matte Laminate from above:</p> <p>* All tops are 1 1/8" thick</p> <p>* Tops have particle board cores unless otherwise specified.</p>	<p><i>Laminated Top with Solid Wood</i>  <i>In the following profiles: # 7500, 7600, 7300</i></p>		
	50 (bullnose)	17-R (bevel)	200 (spillproof)
			
	7500 (bevel)	7600 (bullnose)	7300 (Trim is 1 1/8" x 1/4" thick)
			
Top Surface	Edge Profile		
<p>Any Pionite laminate color</p> <p>* Tops are 1/2" thick phenolic</p> <ul style="list-style-type: none"> <li>* Tops included a 1/2" black phenolic core</li> <li>* Tops included 12" x 12" plywood mounting plate</li> </ul>	<p><i>Phenolic</i></p> <p>8000 (eased)</p>		
			

# TOP GRADE CARD

## ST6 Top Finish Options

Top Surface	Edge Profile		
<p>Wood veneer in any Cape standard finish</p> <p>* Tops have particle board cores unless otherwise specified.</p> <p>* All tops are 1 1/8" thick</p> <p>* Custom veneers available on special request</p>	Solid Wood - In the following profiles: # 7300, 7500, 7600		
	7300	7500	7600
			

Top Surface	Edge Profile Solid Surface				
<p>Solid surface from Cape standard selection</p> <p>* Tops have particle board cores unless otherwise specified.</p> <p>* Tops are 1 1/4" thick</p>	3 (eased)	5 (bullnose)	7 (waterfall)	17 (bevel)	19 (reverse bevel)
					

Top Surface	Edge Profile
<p>Butcher Block</p> <p>* Tops are 1 1/4" thick</p> <p>* Yellow birch</p> <p>* Available in sizes up to 115" in length</p>	Solid Butcher Block in any Cape standard finish
	7900 (eased edge)
	